

APP CRS	Rwy Idg	6930
169°	TDZE	32
	Apt Elev	34

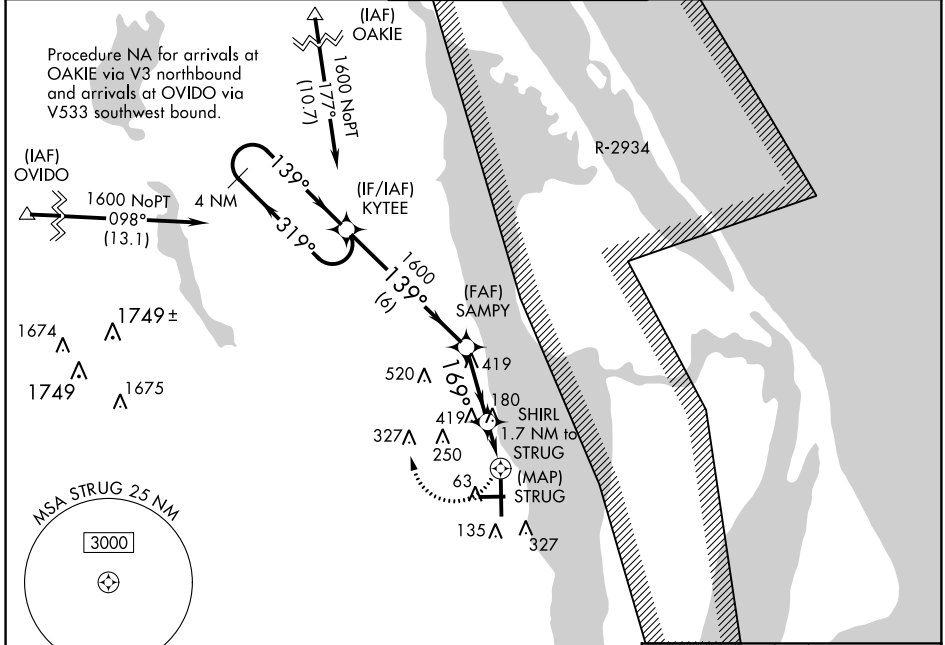
RNAV (GPS) Y RWY 18

SPACE COAST RGNL (TIX)

▼ DME/DME RNP-0.3 NA. Visibility reduction by helicopters NA.
▲ When control tower closed, use Melbourne altimeter setting.
 VDP NA when using Melbourne altimeter setting.

MISSED APPROACH: Climbing right turn to 1600 direct KYTEE and hold.

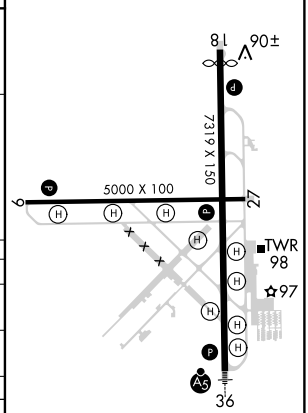
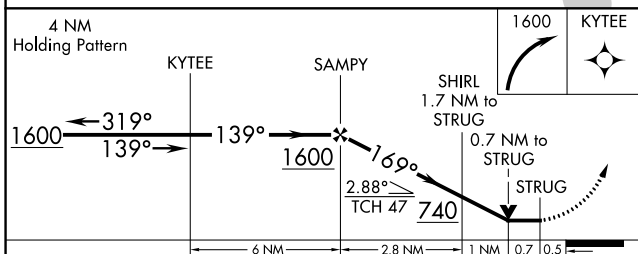
ATIS 120.625	ORLANDO APP CON 134.95 281.425	SPACE COAST TOWER * 118.9 (CTAF) 0	GND CON 121.85	UNICOM 122.95
------------------------	--	--	--------------------------	-------------------------



SE-3, 02 JAN 2020 to 30 JAN 2020

SE-3, 02 JAN 2020 to 30 JAN 2020

ELEV 34	D TDZE 32
---------	------------------



CATEGORY	A	B	C	D
RNAV MDA	440-1 408 (500-1)		440-1¼ 408 (500-1¼)	
CIRCLING	640-1 606 (700-1)		640-1¾ 606 (700-1¾)	640-2 606 (700-2)
MELBOURNE ALTIMETER SETTING MINIMUMS				
RNAV MDA	500-1 468 (500-1)		500-1¼ 468 (500-1¼)	500-1½ 468 (500-1½)
CIRCLING	700-1 666 (700-1)		700-1¾ 666 (700-1¾)	700-2 666 (700-2)

MIRL Rwy 9-27 **L**
 HIRL Rwy 18-36 **L**
 REIL Rwys 9, 18, 27 and 36 **L**